

Additions and Corrections

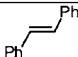
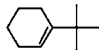
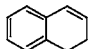
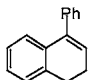
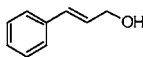
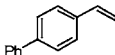
Volume 6, 2004

Philip C. Bulman Page,* Benjamin R. Buckley, and A. John Blacker

Iminium Salt Catalysts for Asymmetric Epoxidation: The First High Enantioselectivities.

Page 1545. Table 3 should appear as shown below.

Table 3. Asymmetric Epoxidation of Various Alkenes Mediated by Catalyst **7a**^a

alkene	time/h	yield/ % ^b	ee/ % ^c	config ^d
	0.45	58	20	(-)- <i>S,S</i>
	0.25	63	25	(-)- <i>1S,2S</i>
	0.30	60	17	(+)- <i>1R,2S</i>
	0.35	66	95	(+)- <i>1R,2S</i>
	2.0	67	38	(-)- <i>2S,3S</i>
	1.0	70	29	(+)- <i>S</i>

^a Conditions: iminium salt (5 mol %), Oxone (2 equiv), Na₂CO₃ (4 equiv), MeCN/H₂O (1:1), 0 °C. ^b Isolated yields. ^c Enantiomeric excesses were determined by ¹H NMR spectroscopy in the presence of (+)-Eu(hfc)₃ or by chiral HPLC using a Chiracel OD column.¹ ^d The absolute configurations of the major enantiomers were determined by comparison of optical rotation with those reported in the literature.

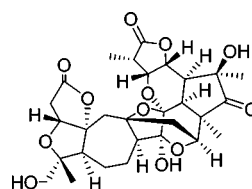
OL061973S

10.1021/ol061973s

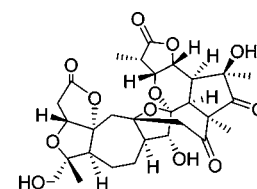
Published on Web 08/25/2006

Volume 8, 2006

Wei-Lie Xiao, Jian-Xin Pu, Ying Chang, Xiao-Li Li, Sheng-Xiong Huang, Liu-Meng Yang, Li-Mei Li, Yang Lu, Yong-Tang Zheng, Rong-Tao Li, Qi-Tai Zheng, and Han-Dong Sun*

Sphenadilactones A and B, Two Novel Nortriterpenoids from *Schisandra sphenanthera*.Page 1475. In the structures of sphenadilactones A and B, we mistook the α -orientation of Me-27 to be the β -orientation. The correct structures are shown below.

Sphenadilactone A



Sphenadilactone B

OL0620794

10.1021/ol0620794

Published on Web 08/30/2006